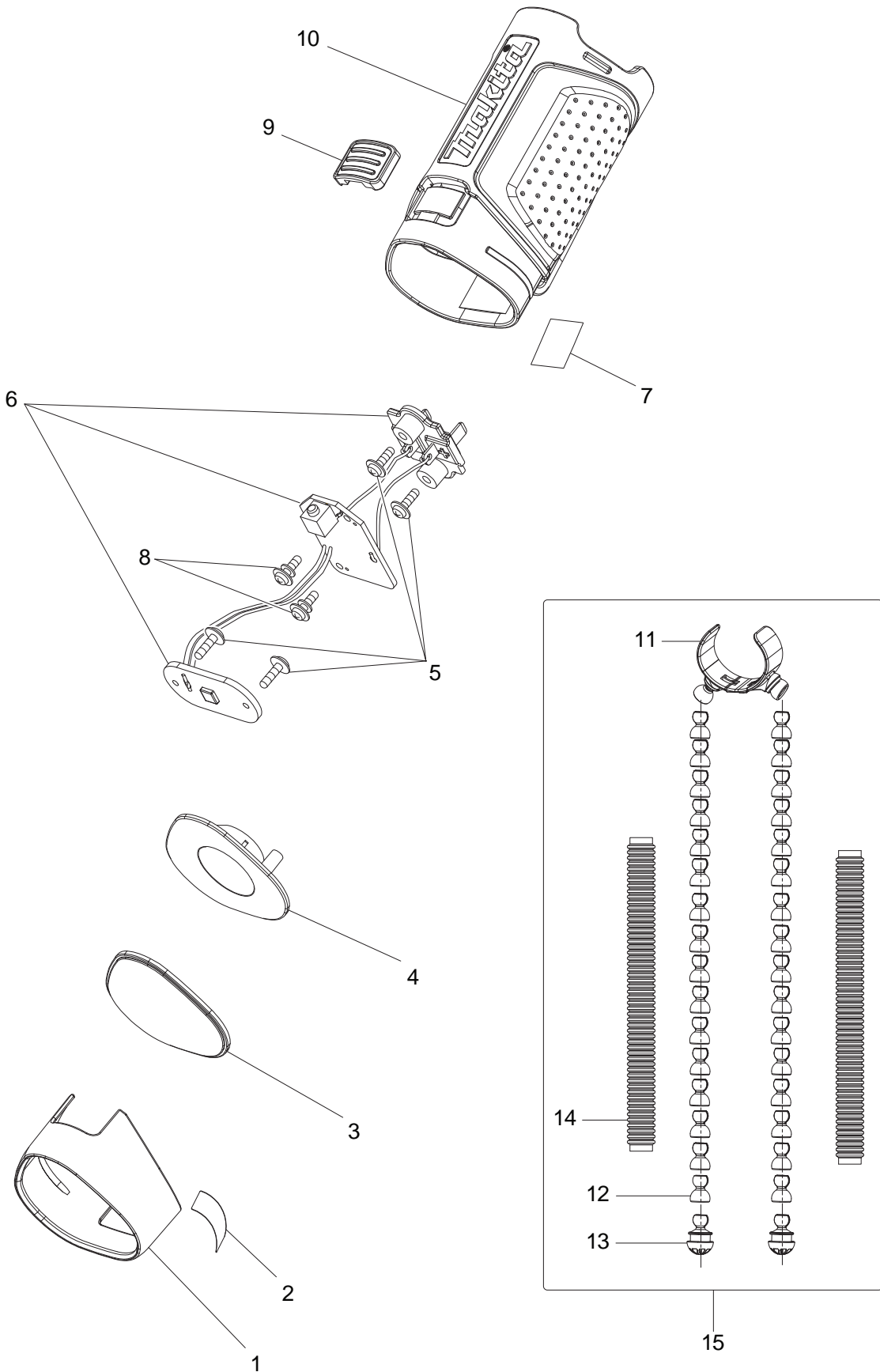




11 - 2010

ML101

10.8V HUG LIGHT with FLEXIBLE LEG



Item No.	Part No.	Description	Qty	Unit
1	GM00001146	HEAD COVER (BLUE) C1705100003	1	PC.
2	GM00001156	LASER LABEL D0271400300	1	PC.
3	GM00001145	LENS C1700100005	1	PC.
4	GM00001144	REFLECTOR C1700100004	1	PC.
5	GM00001143	TAPPING SCREW 2.3X6 BB	4	PC.
6	GM00001142	CIRCUIT BOARD ASSY G0110010001	1	PC.
7	GM00001149	NAME PLATE DEAML101 D027140090	1	PC.
8	GM00001141	TAPPING SCREW 2.3X6 BB WITH FW	2	PC.
9	GM00001140	SWITCH COVER C9800100007	1	PC.
10	GM00001138	MAIN HOUSING ASSY BLUE	1	PC.
11	GM00001124	JOINT BASE ASSY G0610100103	1	PC.
12	GM00001122	JOINT C0110714010	30	PC.
13	GM00001121	JOINT END CAP C0110714011	2	PC.
14	GM00001125	SLEEVE A3230200001	2	PC.
15	GM00001157	LEG ASSY G0610100100	1	PC.
	INC.	Item No. 11- 14		
<u>ACCESSORIES</u>				
A01	194551-4	10.8V LI-ION BATTERY BL1013	1	PC.
A02	DC10WA	CHARGER DC10WA	1	PC.